

# PACKAGE WASTEWATER TREATMENT PLANTS

# K

## Index

| Product  | Drawing Number | Page |
|--|----------------|------|
| How The BAT® Process Works .....   |                | K1   |
| Jet Plant Features .....   | 53JET3 .....   | K2   |
| Jet Plant Specification Chart .....  | 53JET4 .....   | K3   |
| 1500 GPD Jet Commercial Wastewater Treatment Plant 2000 & 3000 Series .....                | 53JET5 .....   | K4   |
| 37,500 to 50,000 GPD Jet Commercial Wastewater Treatment Plant<br>2000 & 3000 Series ..... | 53JET6 .....   | K5   |

Our trained staff can assist with the appropriate plant and component selection to meet your design constraints.

Binghamton Precast & Supply service representatives will assist you or your contractor with installation of your system.

For additional information and assistance, contact our staff at (607) 722-0334 or (800) 333-1474.

### Notes to Specifiers:

Binghamton Precast & Supply Corp. is a licensed manufacturer for the Commercial and Residential Jet Wastewater Treatment Plants. The Jet design is based on widely accepted criteria set forth by leading health agencies and has received the National Sanitation Foundation Seal of Acceptance.

Commercial Jet Plants can be manufactured to accommodate flows from 1500 to 50,000 gallons per day.

**Binghamton**



**Precast  
& Supply**

18 Phelps Street, Binghamton, NY 13901

Fax: (607) 722-0496

Email: [sales@binghamtonprecast.com](mailto:sales@binghamtonprecast.com)

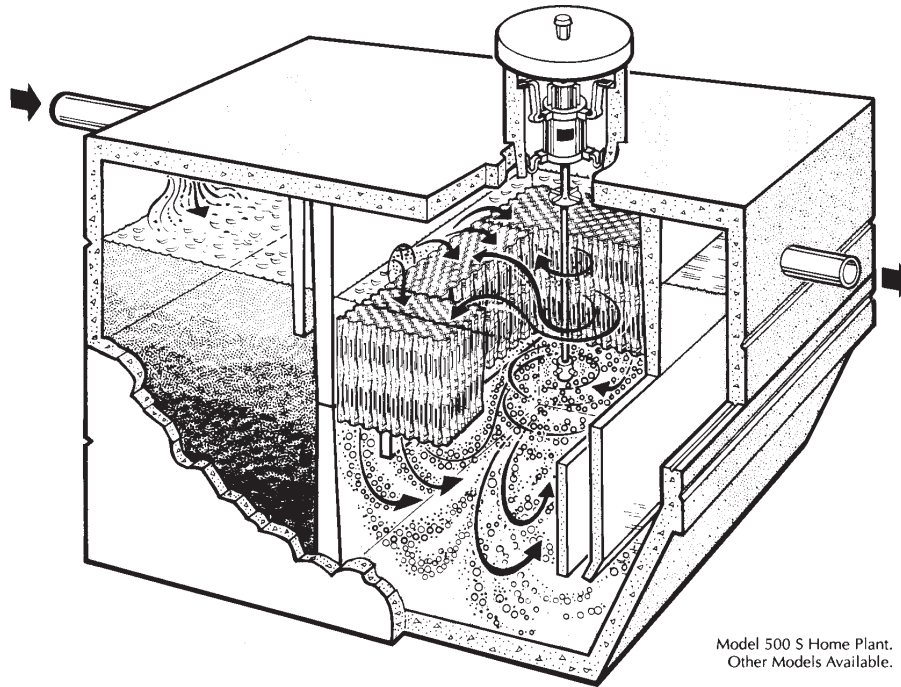
Phone: (607) 722-0334

Toll Free: 1-800-336-1474

Website: [www.binghamtonprecast.com](http://www.binghamtonprecast.com)

# K1

## How the BAT® Process Works



Model 500 S Home Plant.  
Other Models Available.

The compact, efficient BIOLOGICALLY ACCELERATED TREATMENT™ Plant – which we call the JET BAT® Plant – has three compartments. The Pretreatment Compartment, on the left, receives the wastewater and partially treats it physically and biologically before it enters the Center Treatment Compartment.

In this Center Treatment Compartment, technically referred to as a “bio-reactor”, the JET Aerator injects fresh air to provide oxygen and mixing to support Jet’s revolutionary BAT® process. In this process, huge numbers of microorganisms – called a “biomass” – attach themselves to the submerged Jet BAT Process Media®. These microorganisms provide an extraordinarily rapid and high degree of treatment, converting the wastewater to odorless, colorless liquids and gases. Air from the JET Aerator provides the oxygen required by the microorganisms to complete this process. Mixing insures that all the wastewater inside this compartment comes in contact with the microorganisms for total treatment.

After treatment, the center compartment contents flow into the Settling Compartment where fine particles settle and return to the treatment compartment. This leaves only a clear, odorless, highly treated liquid for discharge.

As shown in the preceding chart, “The Bottom Line”, chlorination with JET-CHLOR provides additional treatment.

18 Phelps Street, Binghamton, NY 13901

Fax: (607) 722-0496

Email: [sales@binghamtonprecast.com](mailto:sales@binghamtonprecast.com)

Phone: (607) 722-0334

Toll Free: 1-800-336-1474

Website: [www.binghamtonprecast.com](http://www.binghamtonprecast.com)

**Binghamton**

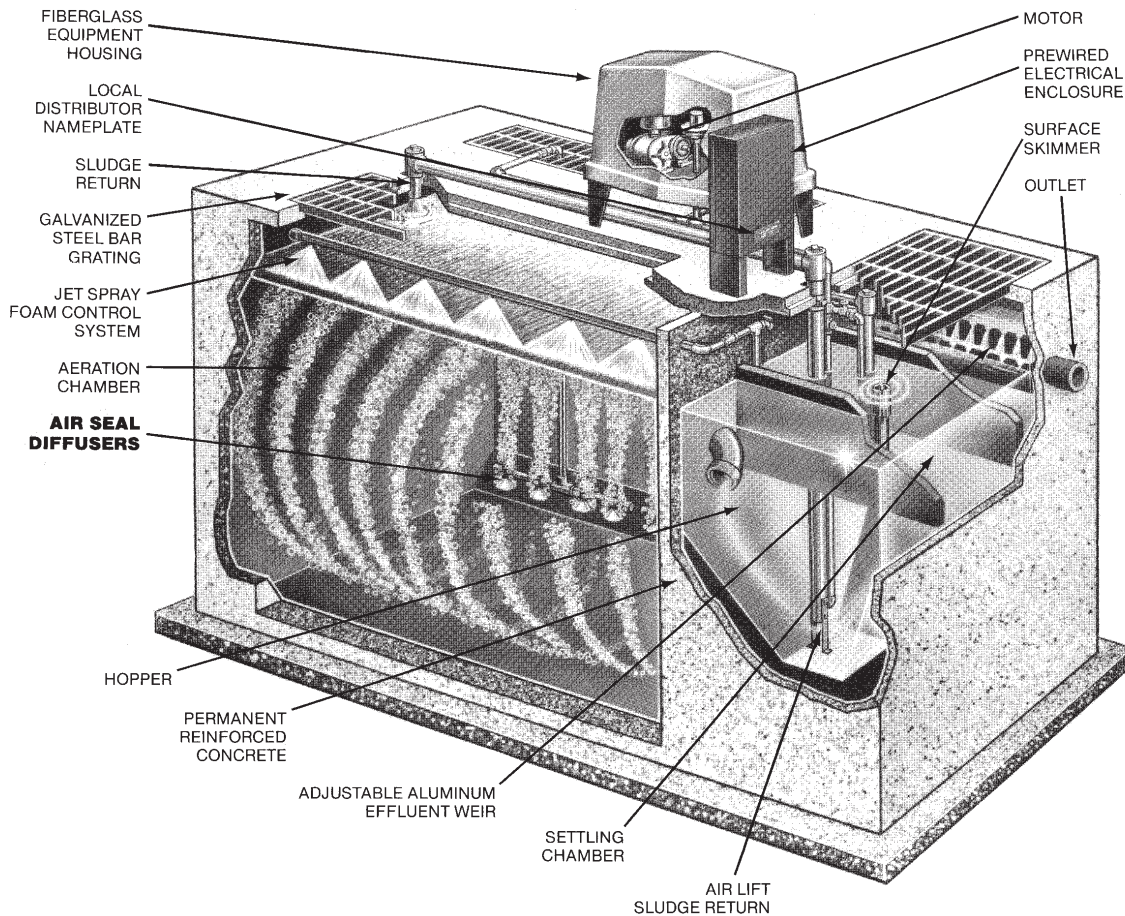


**Precast  
& Supply**

# Jet Plant Features

K2

Drawing Number 53JET3



## POLLUTION CONTROL BEYOND SEWER LINES

Package Wastewater Treatment Plants solve wastewater problems. They make it possible for motels and service stations to be built along interstate highways far from towns . . . subdivisions to be planned in scenic areas miles beyond sewer lines . . . factories to be located on outlying sites.

JET's Package Plants operate on the extended aeration principle, treating wastewater by a biological process called aerobic digestion. In this process, microscopic organisms use oxygen to "digest" wastewater and transform it into clear odorless liquid.

### JET THREE-STAGE TREATMENT PROCESS

**Pre-Treatment.** In a JET Plant, large objects in the wastewater are caught by pre-treatment devices such as bar screens, trash traps, or comminutors (wastewater grinders) and broken down before being allowed to pass into the aeration chamber. Untreatable material like plastic or metal is kept out completely.

**Aeration.** After pre-treatment, the wastewater flows into an aeration tank where it is mixed with air. Air Diffusers at the bottom of the aeration tank bubble in large amounts of air for two purposes — to meet the oxygen demand of the aerobic digestion process and to mix the aeration tank contents, insuring complete treatment. In the aeration tank, the pre-treated wastewater is held for 24 hours while being transformed into a clear odorless liquid.

**Settling.** From the aeration tank the treated liquid flows into a settling tank that holds the liquid completely still. Here any small particles in suspension settle to the bottom and are returned to the aeration tank for further treatment.

This settling process in the final tank of a JET Plant leaves a clear, highly treated water at the top. Only this highly treated liquid (called "effluent") leaves the plant and returns to the environment.

**Binghamton**



**Precast  
& Supply**

18 Phelps Street, Binghamton, NY 13901

Fax: (607) 722-0496

Email: [sales@binghamtonprecast.com](mailto:sales@binghamtonprecast.com)

Phone: (607) 722-0334

Toll Free: 1-800-336-1474

Website: [www.binghamtonprecast.com](http://www.binghamtonprecast.com)

# K3

# Jet Specification Chart

## Drawing Number 53JET4

This chart provides the information required to complete the specifications for any 3000 Series JET Commercial Wastewater Treatment Plant.

First, determine the plant size in the extreme left column (Plant Size GPD). Then, proceed from left to right

on that plant size line to obtain the additional information required in the appropriate columns. The columns are numbered in the order the information is required in the specifications.

| 1<br>Plant<br>Size<br>GPD | 2<br>3000<br>Series<br>Model<br>Number | 3<br>Drawing<br>Number | 4<br>Aeration<br>Volume<br>Gal. | 5<br>Daily<br>B.O.D.<br>Loading<br>Lbs. | 6<br>Aeration<br>Capacity<br>Cubic<br>Feet | 7<br>Air<br>Required<br>CFD | 8<br>Air<br>Available<br>CFD | 9<br>Air<br>Available<br>CFM | 10<br>Pressure<br>PSI | 11<br>Settling<br>Volume<br>Gal. | 12<br>Settling<br>Rate<br>GPD/<br>Sq. Ft. | 13<br>Overflow<br>Rate<br>GPD | 14<br>Motor<br>HP |
|---------------------------|--|------------------------|---------------------------------|---|--|-----------------------------|------------------------------|------------------------------|-----------------------|----------------------------------|---|-------------------------------|-------------------|
| 1,500                     | 15                                     | 15                     | 1,500                           | 2.5                                     | 204  | 27,000                      | 57,600                       | 40                           | 2.4                   | 250                              | 68  | 500                           | 1                 |
| 2,000                     | 20                                     | 20-35                  | 2,000                           | 3.4                                     | 272  | 36,720                      | 69,120                       | 48                           | 2.4                   | 335                              | 90  | 665                           | 1½                |
| 2,500                     | 25                                     | 20-35                  | 2,500                           | 4.2                                     | 340  | 36,720                      | 67,680                       | 47                           | 2.7                   | 420                              | 113                                       | 833                           | 1½                |
| 3,000                     | 30                                     | 20-35                  | 3,000                           | 5.1                                     | 408  | 36,720                      | 76,320                       | 53                           | 3.4                   | 500                              | 136                                       | 1000                          | 2                 |
| 3,500                     | 35                                     | 20-35                  | 3,500                           | 5.9                                     | 476  | 36,720                      | 73,440                       | 51                           | 3.8                   | 585                              | 158                                       | 1165                          | 2                 |
| 4,000                     | 40                                     | 40-90                  | 4,000                           | 6.8                                     | 544  | 51,840                      | 103,680                      | 72                           | 2.2                   | 670                              | 109                                       | 362                           | 1½                |
| 5,000                     | 50                                     | 40-90                  | 5,000                           | 8.5                                     | 680  | 51,840                      | 100,800                      | 70                           | 2.5                   | 840                              | 137                                       | 455                           | 1½                |
| 6,000                     | 60                                     | 40-90                  | 6,000                           | 10.2                                    | 816  | 51,840                      | 95,040                       | 66                           | 3.3                   | 1000                             | 164                                       | 545                           | 2                 |
| 7,500                     | 75                                     | 40-90                  | 7,500                           | 12.7                                    | 1020                                       | 51,840                      | 92,160                       | 64                           | 3.7                   | 1250                             | 205                                       | 683                           | 2                 |
| 9,000                     | 90                                     | 40-90                  | 9,000                           | 15.3                                    | 1224                                       | 51,840                      | 86,400                       | 60                           | 4.7                   | 1500                             | 247                                       | 820                           | 3                 |
| 10,000                    | 100                                    | 100-120                | 10,000                          | 17.0                                    | 1367                                       | 53,279                      | 92,160                       | 64                           | 3.8                   | 3408                             | 133                                       | 910                           | 2                 |
| 11,000                    | 110                                    | 100-120                | 11,000                          | 18.7                                    | 1514                                       | 53,279                      | 89,280                       | 62                           | 4.4                   | 3958                             | 146                                       | 1000                          | 3                 |
| 12,000                    | 120                                    | 100-120                | 12,000                          | 20.4                                    | 1636                                       | 53,279                      | 87,840                       | 61                           | 4.6                   | 4416                             | 160                                       | 1590                          | 3                 |
| 13,000                    | 130                                    | 130-180                | 13,000                          | 22.1                                    | 1793                                       | 79,920                      | 118,080                      | 82                           | 3.3                   | 2766                             | 173                                       | 1180                          | 2                 |
| 14,000                    | 140                                    | 130-180                | 14,000                          | 23.7                                    | 1903                                       | 79,920                      | 116,640                      | 81                           | 3.5                   | 3041                             | 186                                       | 1270                          | 3                 |
| 15,000                    | 150                                    | 130-180                | 15,000                          | 25.5                                    | 2050                                       | 79,920                      | 115,200                      | 80                           | 3.8                   | 3408                             | 200                                       | 1360                          | 3                 |
| 16,000                    | 160                                    | 130-180                | 16,000                          | 27.2                                    | 2271                                       | 79,920                      | 110,880                      | 77                           | 4.4                   | 3958                             | 213                                       | 1450                          | 3                 |
| 17,000                    | 170                                    | 130-180                | 17,000                          | 28.9                                    | 2345                                       | 79,920                      | 110,880                      | 77                           | 4.4                   | 4141                             | 226                                       | 1550                          | 3                 |
| 18,000                    | 180                                    | 130-180                | 18,000                          | 30.6                                    | 2455                                       | 79,920                      | 109,440                      | 76                           | 4.6                   | 4416                             | 240                                       | 1640                          | 3                 |
| 19,000                    | 190                                    | 190-240                | 19,000                          | 32.3                                    | 2661                                       | 106,560                     | 145,440                      | 118                          | 3.7                   | 3270                             | 253                                       | 1730                          | 5                 |
| 20,000                    | 200                                    | 190-240                | 20,000                          | 34.0                                    | 2734                                       | 106,560                     | 145,440                      | 117                          | 3.8                   | 3408                             | 266                                       | 1815                          | 5                 |
| 21,000                    | 210                                    | 190-240                | 21,000                          | 35.4                                    | 2832                                       | 106,560                     | 146,880                      | 117                          | 3.9                   | 3591                             | 280                                       | 1910                          | 5                 |
| 22,000                    | 220                                    | 190-240                | 22,000                          | 37.4                                    | 3028                                       | 106,560                     | 149,760                      | 113                          | 4.4                   | 3958                             | 293                                       | 2000                          | 5                 |
| 23,000                    | 230                                    | 190-240                | 23,000                          | 39.1                                    | 3126                                       | 106,560                     | 149,760                      | 113                          | 4.4                   | 4141                             | 306                                       | 2090                          | 5                 |
| 24,000                    | 240                                    | 190-240                | 24,000                          | 40.8                                    | 3273                                       | 106,560                     | 148,320                      | 112                          | 4.6                   | 4416                             | 320                                       | 2180                          | 5                 |
| 25,000                    | 250                                    | 250-350                | 25,000                          | 42.5                                    | 3440                                       | 159,840                     | 231,840                      | 161                          | 3.3                   | 5166                             | 167                                       | 2270                          | 5                 |
| 27,500                    | 275                                    | 250-350                | 27,500                          | 46.8                                    | 3808                                       | 159,840                     | 230,400                      | 160                          | 3.5                   | 6083                             | 183                                       | 2500                          | 5                 |
| 30,000                    | 300                                    | 250-350                | 30,000                          | 51.0                                    | 4102                                       | 159,840                     | 227,520                      | 158                          | 3.8                   | 6816                             | 200                                       | 2725                          | 5                 |
| 32,500                    | 325                                    | 250-350                | 32,500                          | 55.3                                    | 4543                                       | 159,840                     | 223,200                      | 155                          | 4.4                   | 7916                             | 217                                       | 2950                          | 5                 |
| 35,000                    | 350                                    | 250-350                | 35,000                          | 58.6                                    | 4689                                       | 159,840                     | 223,200                      | 155                          | 4.4                   | 8283                             | 233                                       | 3175                          | 5                 |
| 37,500                    | 375                                    | 375-500                | 37,500                          | 63.8                                    | 5420                                       | 213,120                     | 342,720                      | 240                          | 3.8                   | 6724                             | 250                                       | 1705                          | 7½                |
| 40,000                    | 400                                    | 375-500                | 40,000                          | 68.0                                    | 5665                                       | 213,120                     | 338,400                      | 244                          | 3.9                   | 7182                             | 267                                       | 1835                          | 7½                |
| 42,500                    | 425                                    | 375-500                | 42,500                          | 72.3                                    | 6057                                       | 213,120                     | 335,520                      | 239                          | 4.4                   | 7916                             | 284                                       | 1938                          | 7½                |
| 45,000                    | 450                                    | 375-500                | 45,000                          | 76.5                                    | 6253                                       | 213,120                     | 335,520                      | 239                          | 4.4                   | 8282                             | 300                                       | 2050                          | 7½                |
| 47,500                    | 475                                    | 375-500                | 47,500                          | 80.8                                    | 6547                                       | 213,120                     | 334,080                      | 235                          | 4.6                   | 8832                             | 317                                       | 2160                          | 7½                |
| 50,000                    | 500                                    | 375-500                | 50,000                          | 83.6                                    | 6695                                       | 217,360                     | 334,080                      | 235                          | 4.7                   | 9107                             | 334                                       | 2275                          | 7½                |

18 Phelps Street, Binghamton, NY 13901

Fax: (607) 722-0496

Email: sales@binghamtonprecast.com

Phone: (607) 722-0334

Toll Free: 1-800-336-1474

Website: www.binghamtonprecast.com

**Binghamton**

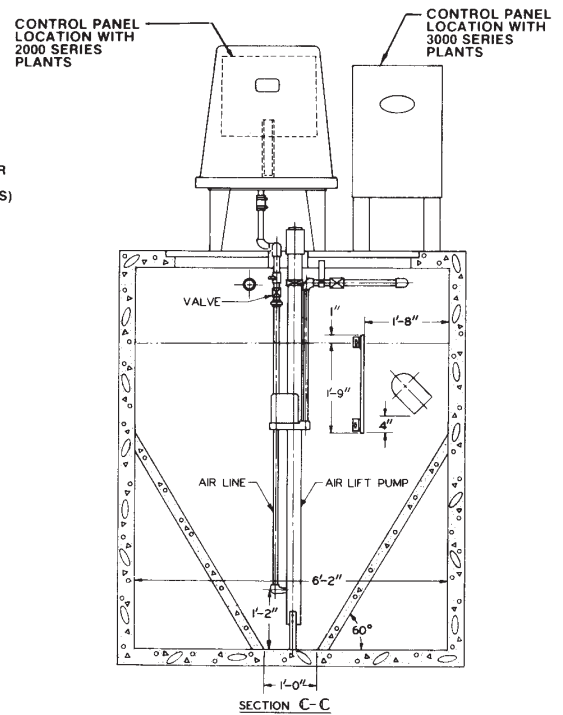
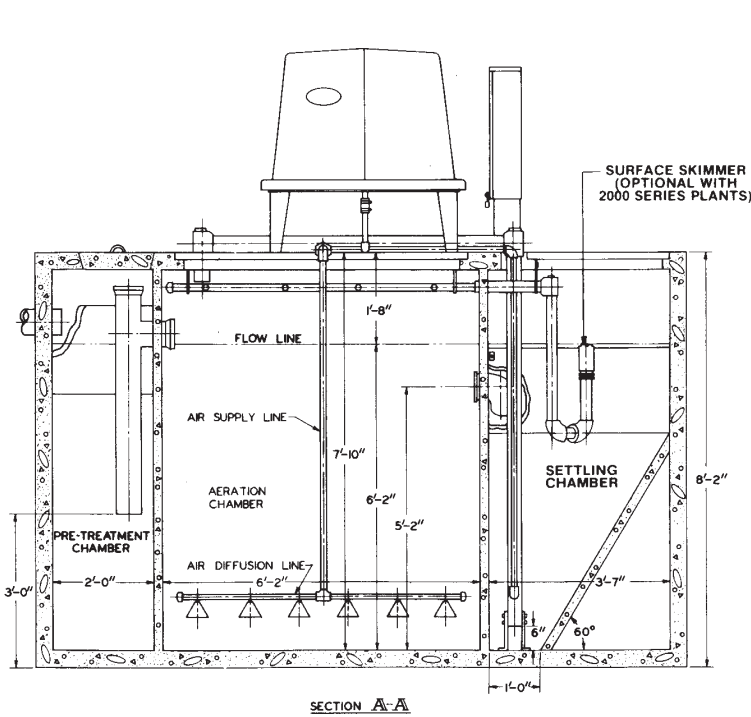
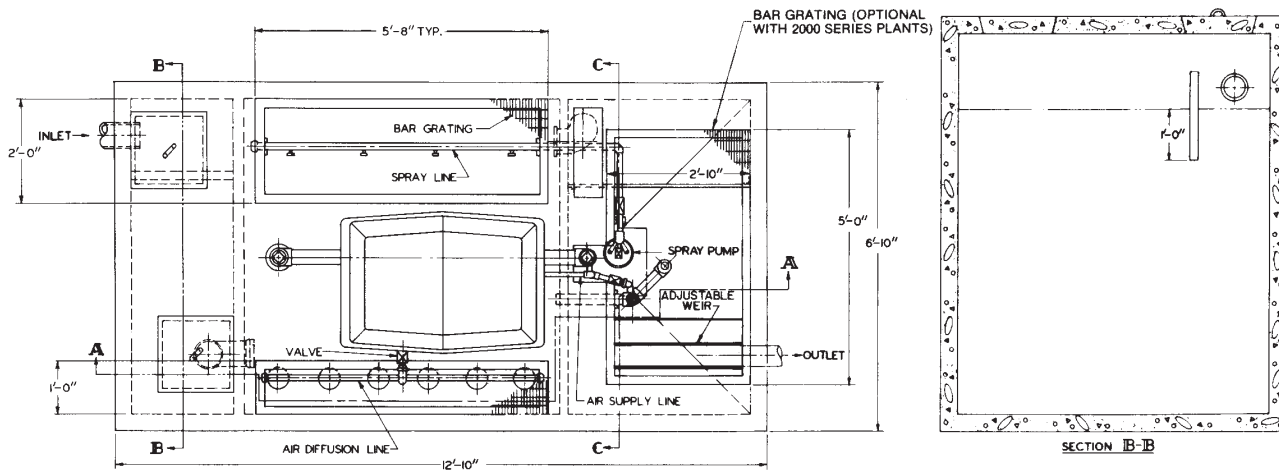


**Precast  
& Supply**

# 1500 GPD Jet Commercial Wastewater Treatment Plant 2000 & 3000 Series

# K4

Drawing Number 53JET5:



Note: To minimize fall thru plant, locate inlet invert 6" above flow line.

**Binghamton**



**Precast  
& Supply**

18 Phelps Street, Binghamton, NY 13901

Fax: (607) 722-0496

Email: [sales@binghamtonprecast.com](mailto:sales@binghamtonprecast.com)

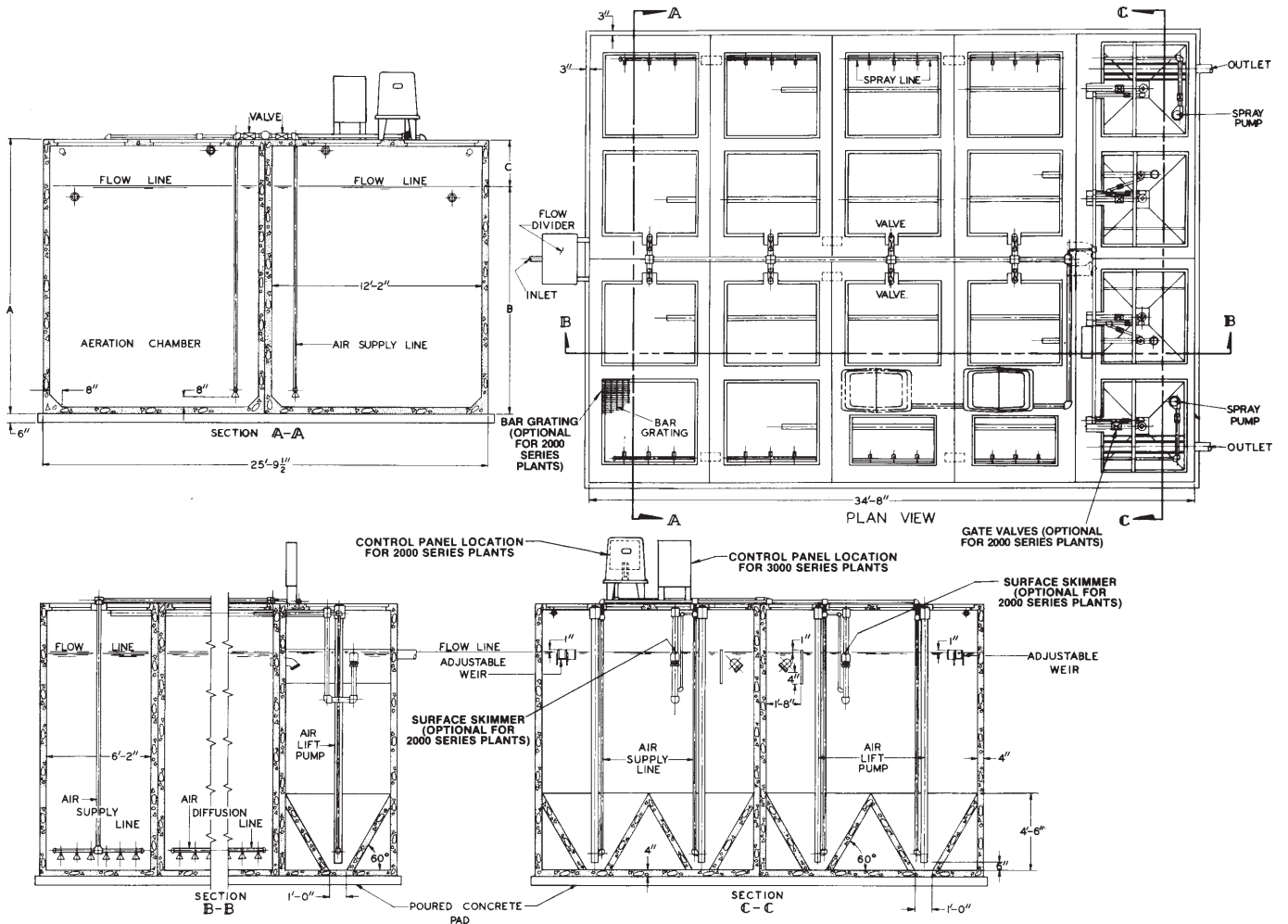
Phone: (607) 722-0334

Toll Free: 1-800-336-1474

Website: [www.binghamtonprecast.com](http://www.binghamtonprecast.com)

# K5 37,000 to 50,000 GPD Jet Commercial Wastewater Treatment Plant 2000 & 3000 Series

Drawing Number 53JET6



\*SOME RING CASTINGS MAY BE ELIMINATED IF THE HEALTH DEPT. GRANTS PERMISSION TO REDUCE FREEBOARD. CONTACT JET FOR INFORMATION.

NOTE: TO MINIMIZE FALL THRU PLANT LOCATE INLET INVERT 6" ABOVE FLOW LINE.

18 Phelps Street, Binghamton, NY 13901

Fax: (607) 722-0496

Email: [sales@binghamtonprecast.com](mailto:sales@binghamtonprecast.com)

Phone: (607) 722-0334

Toll Free: 1-800-336-1474

Website: [www.binghamtonprecast.com](http://www.binghamtonprecast.com)

**Binghamton**



**Precast  
& Supply**